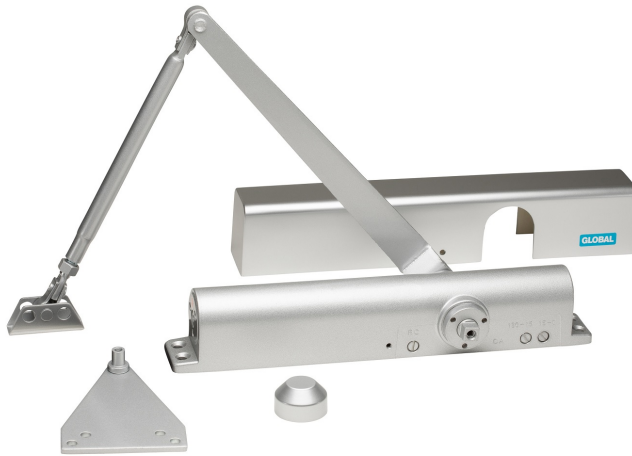


GRADE 1

TC400/500 SERIES

GRADE 1 HEAVY DUTY CLOSER

The TC400 and TC500 Series are recommended for use on commercial, architectural and institutional applications. These models are ideal for commercial, new construction and renovations. Both models have a full selection of accessories to accommodate the requirements of any door application. Fully compliant with opening force requirements for ADA and ANSI/BHMA standards.



FEATURES

- Grade 1 certified, ANSI/BHMA A156.4
- UL Listed R7483
- Aluminum Alloy body
- Non-handed / reversible
- Narrow cover - 400 slimline series
- Full cover - 500 standard series
- Multi-size spring models - 411/511 adjustable power 1-4 ADA barrier free, 412/512 adjustable power 2-6
- Three independent regulating valves - control sweep, latch closing speeds and backcheck
- Tri packed - regular, top jamb, parallel arm mount
- Supplied with both wood and machine screws
- 25 year warranty
- Finish: AL, DU

OPTIONS

- Delayed Action - TC411DA in lieu of backcheck
- Hold Open Parallel Arm Bracket - HOPAB-1245 [order separately]

ACCESSORIES - See Page 45

<u>Model #</u>	<u>CTC Hole Pattern</u>
TC400/500	12" x 3/4"

CROSS REFERENCE

	LCN	NORTON	DORMA	DOR-O-MATIC FALCON	RIXSON	SARGENT	YALE	CORBIN- RUSSWIN	ARROW
TC400	NA	8301	8600	SC80	M2220PH	1330	3301	NA	5000
TC500	NA	8501	NA	SC81	M2220	M30	3501	DC3200	5000

	CAL-ROYAL	INTERNATIONAL	JACKSON	RYOBI	SENTINEL	S. PARKER	TACO	TAYMOR	CRL
TC400	801	5050	NA	D-3551	NA	BF900	831	NA	PR50
TC500	8015	5000	NA	D-3550	NA	900BC	851	NA	PR52